

Stroke/Heart attack

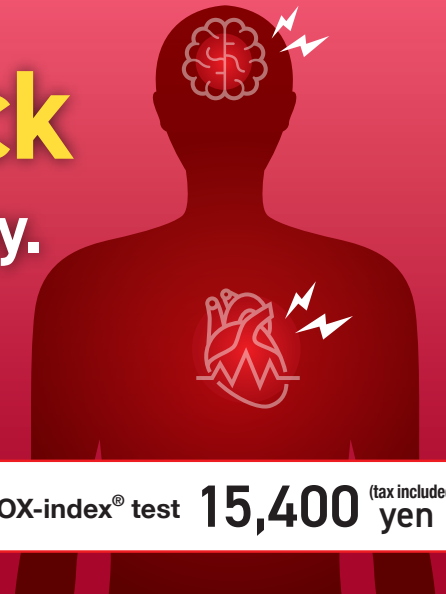
Symptoms can develop within a day.

The number of the annual deaths with cerebrovascular and heart diseases is almost the same as the one with cancers.

1 out of 4 die with arteriosclerotic diseases.

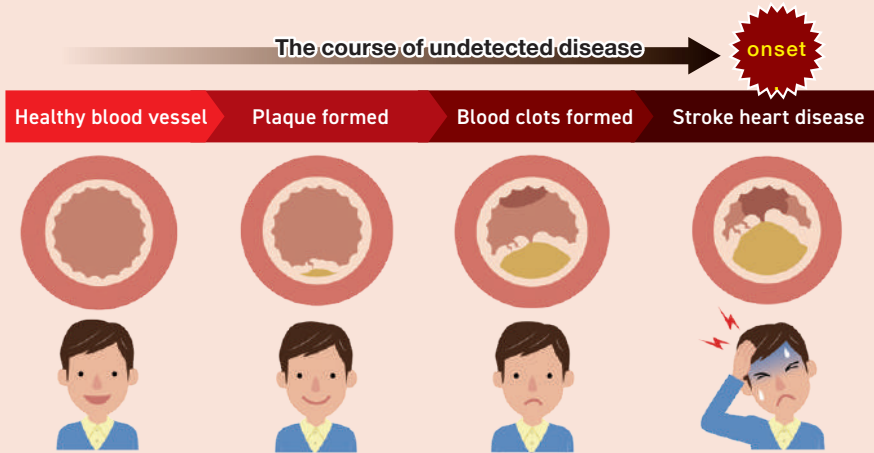
LOX-index® evaluates the onset risks for strokes and heart attack in the future by measuring the causative agents for arteriosclerosis.

LOX-index® test **15,400** (tax included) yen



Arteriosclerosis can be serious.

Arteriosclerosis is progressing without notice, then strokes or heart attacks suddenly develop one day.



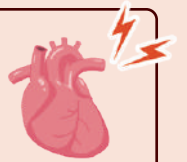
Stroke

Disease causes bedridden state 1 out of 3 dies or have a sequela.



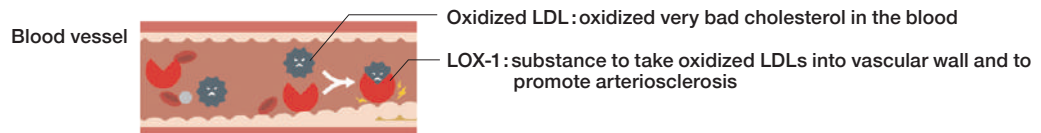
Heart attack

Disease may cause sudden death Approximately 150 thousand people have heart attacks annually.



Important to change lifestyle and early prevention

[LOX-index®] The combination of oxidized LDL and LOX-1 causes arteriosclerosis which is the factors for strokes and heart attacks. The test is to confirm the amount of oxidized LDL and LOX-1 accumulation in blood vessels and evaluate **the risk of developing stroke or heart attack.**



- < Precaution >
- * Refrain from LOX-index® test during pregnancy (test values tends to be high for those who are within 3 months after giving births).
 - * Test values may be high if you have a rheumatoid disease or a fever.
 - * Test values may be low if you take a therapeutic agent for dyslipidemia, an antiplatelet drug or a depressor.

Booking for LOX-index®

Tokyo Midtown Clinic
(direct connection to Roppongi station)

03-5413-0081

[open]
Mon. to Fri. 9:00-17:00 (excl. Sat. Sun. and Holidays)



www.tokyoamidtown-mc.jp/en/health

Nihonbashi Muromachi Mitsui Tower Midtown Clinic
(direct connection to Mitsukoshimae station)

03-3231-2068

[open]
Mon. to Fri. 9:00-17:00 (excl. Sat. Sun. and Holidays)



www.mtc-nihonbashi.jp/en/medical_checkup